



City of Clearwater

Fictional Municipality



Overview

The City of Clearwater is a growing regional hub with a diverse economy including tourism, light industry, healthcare, and education.

The municipality provides essential public services to residents, businesses, and surrounding rural communities.

The City operates under a Mayor–Council governance model, with an established Emergency Operations Centre (EOC) and a formal emergency management program aligned to provincial requirements.

Type

Mid-sized Canadian municipality

Population

~185,000

Location

Western Canada (coastal/inland hybrid)

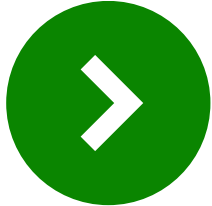


Core Operations

- Core Services:**
- Emergency services (Fire, Police, EMS coordination)
 - Water treatment and distribution
 - Wastewater and sanitation
 - Public works (roads, traffic control, infrastructure maintenance)
 - Parks and recreation
 - Bylaw enforcement
 - Social and community services

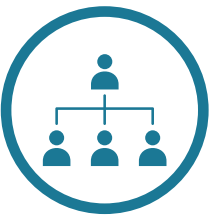
- Critical Infrastructure:**
- Water treatment plant (automated, SCADA-controlled)
 - Wastewater treatment facility
 - Traffic management systems (signals, cameras)
 - Municipal data centre (limited redundancy; some cloud migration underway)
 - Emergency Operations Centre (EOC)

- Workforce:**
- ~900 municipal employees
 - Unionized workforce across public works and utilities
 - 24/7 staffing in emergency services and utilities



City of Clearwater

- Prioritize life safety and essential services
- Allocate limited resources (fuel, personnel, communications)
- Coordinate across departments and with external agencies
- Manage public communications and misinformation
- Make policy and operational decisions under pressure



Leadership Structure

- Mayor (public-facing leadership)
- City Manager (overall operations)
- Director, Emergency Management / EOC Lead
- Chief of Police / Fire Chief
- Director, Public Works & Utilities
- Director, Communications
- IT Manager / Cybersecurity Lead



Key Dependencies

- Electrical power for water, wastewater, and traffic systems
- Telecommunications (radio, cellular, internet)
- Provincial emergency coordination and mutual aid agreements
- Fuel supply for fleet vehicles and generators
- Public compliance and trust during emergencies



Risk Profile (Pre-Incident)

- Aging infrastructure in some areas
- Increasing cyber risk to SCADA and municipal systems
- Growing population placing strain on services
- Limited redundancy in communications systems
- High public expectation for uninterrupted services and transparency



Technology Environment

- SCADA systems for water and wastewater operations
- Municipal IT network supporting finance, HR, and public services
- Public-facing website and emergency alert system
- Reliance on telecommunications for coordination with provincial agencies and first responders
- Backup generators at key facilities (fuel for ~48-72 hours under normal load)



Critical Infrastructure

- Water treatment plant (automated, SCADA-controlled)
- Wastewater treatment facility
- Traffic management systems (signals, cameras)
- Municipal data centre (limited redundancy; some cloud migration underway)
- Emergency Operations Centre (EOC)

